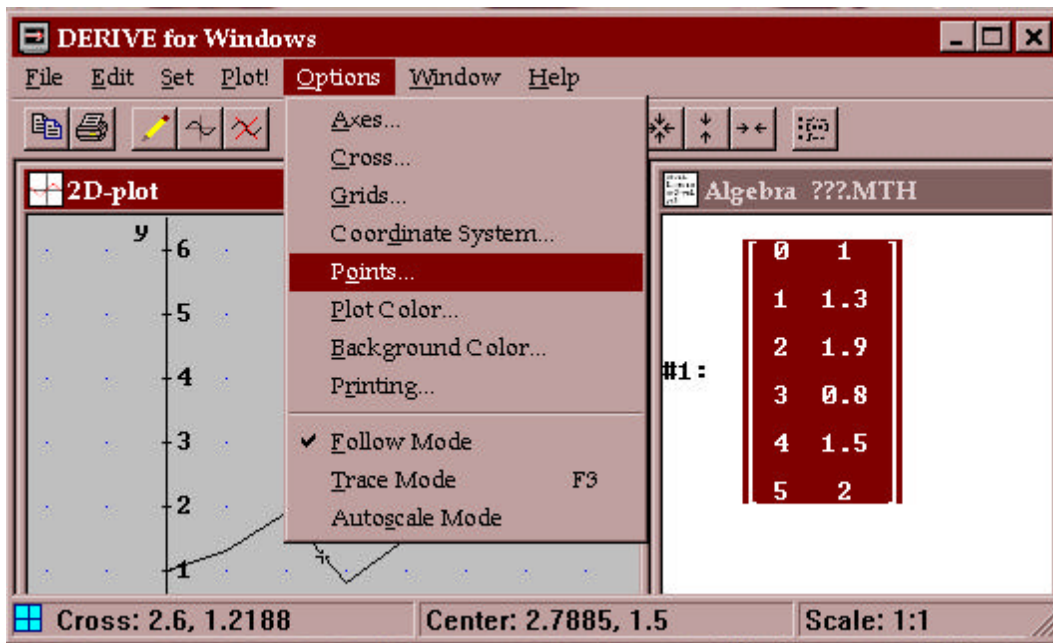


Connecting Points

To connect points by line segments, choose Options from the menu bar in the plot window. There are items here to customize your plots: Plot Color, Axes, Grids, Background Color, Coordinate system, Points and so on. To connect points we choose Points and then check the Yes button. You can also modify the size of the points by clicking the appropriate button. The colour of a plot is controlled by choosing Options/Plot Color and then making the selection in the menu.



Trace Mode

We can inspect the graph of a function by turning on the trace mode. Choose Options/Trace Mode or pressing the F3 key while in the plot window. The cross hair will change into a square and relocate itself onto the curve. You can only move the square along the curve either by using the arrow keys or by clicking with mouse pointer at a new location on the curve. Pressing the up or down arrow selects a new graph to trace. Pressing the F3 key deselects the trace mode.